

nature

Extended Data formatting guidelines

Nature allows authors to supply up to a maximum of 10 Extended Data display items (figures and tables), which do not appear in the printed version of the paper, but are included online within the full-text HTML and at the end of the online PDF.

Authors may combine their Extended Data figures into multi-panelled figure providing they meet the size rules. Tabulated data can either be intergrated into an Extended Data figure as a separate panel or be formatted as a separate display item.

Extended Data figures and tables are cited in the text in the same way as the main (print) figures and tables. Unlike the main figures, Extended Data figures are not edited or styled by our art department; for this reason, authors are requested to follow *Nature's* style guide as closely as possible.



For further help and advice, e-mail our production department at **production.help@springernature.com**

Contents

Figure sizing and positioning page 3

Lettering and line weights page 4

Resolution and colour page 5

Table formatting page 6

File formats page 7

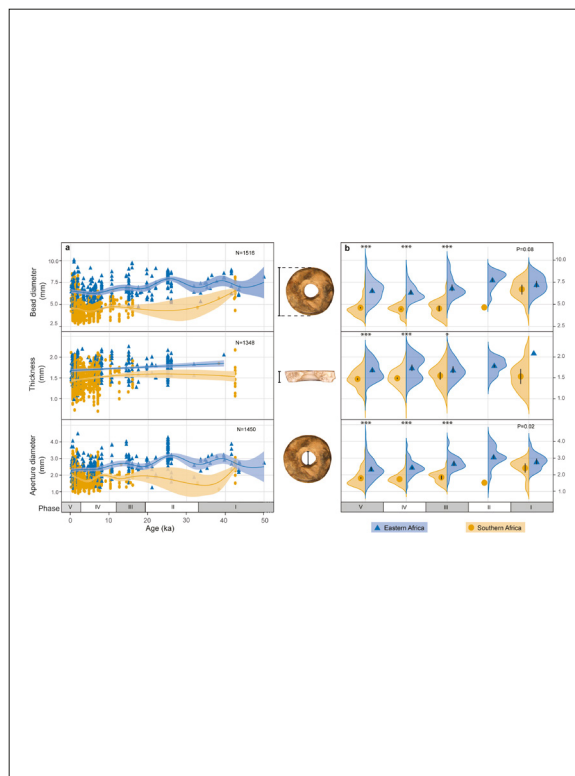
Examples page 8

Figure sizing & positioning

Maximum page dimensions are **180 mm wide by 170 mm tall**. (170 mm to fit a legend underneath).

Try to position the figure in the centre of each page.

Figures should be sized that they fit to a single page (preferably leaving enough room for the legend to be set below, across two columns). However, in exceptional circumstance (for example if sizing to keep the image and legend to one page results in an illegible figure) the legend can be a second page. Supplying figures at greater dimensions will result in larger files that we may not be able to use.



Place each figure on a new page when uploading online.

Try to keep white space to a minimum when arranging panels within a figure.

Lettering & line weights

Lettering

All text should be a sans-serif typeface, preferably Helvetica or Arial.

Amino acid sequences should be presented in one-letter code in Courier font.

Separate panels in multi-panelled figures should be labelled with 8-pt bold, upright (not italic) and lowercase a, b, c, etc.

Maximum text size for all other text is 7-pt and the minimum is 5-pt.

Use 'symbol' for glyphs and Greek alphabet.



Line weights

Lines and strokes should be set between 0.25 and 1 pt.



Resolution and colour

Resolution

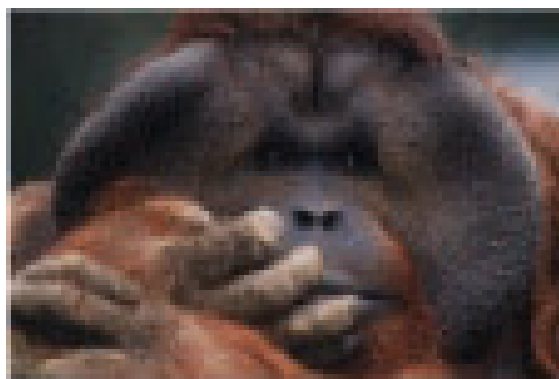
All photographic images and figures can be supplied at 300 dpi.

This example shows how an image would look if the resolution were too low and how it would look at the recommended dpi. Anything exceeding this will be too large and readers may be timed out before they can view them.

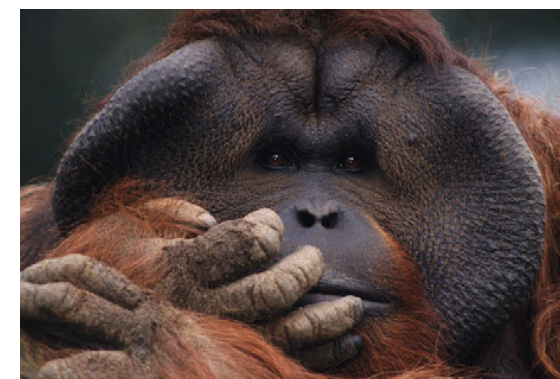
Colour

Files must be saved in RGB for maximum saturation and smaller file size for optimized viewing online.

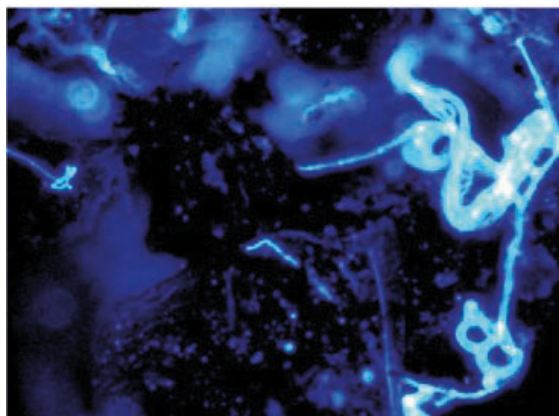
72 dpi



300 dpi



RGB (optimised for digital)



CMYK (optimised for print)

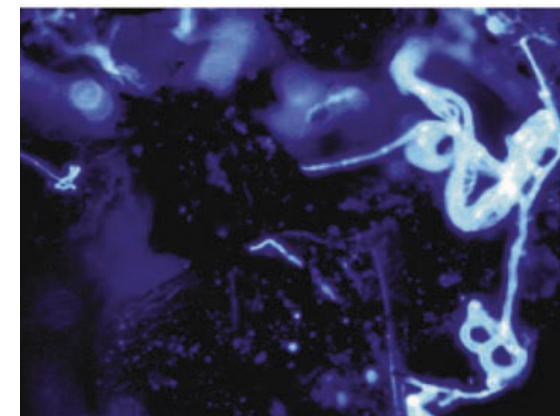


Table formatting

Add a horizontal rule above and below column headings and at the bottom of the table.

Tables can be set at one-column (89 mm) or two column (180 mm) width.

Use spaces rather than rules to separate blocks of data, but horizontal rules can be used to improve clarity in certain cases.

Colour should be avoided unless scientifically necessary.

Tables should not exceed a single page (leaving enough room for any footnotes).

All text should be sans-serif typeface, preferably Helvetica or Arial and please use 7-pt text.

Heading	Heading	Heading	Heading
XXXXXXXX	XXXXXXXX	XXXXXXXX	XXXXXXXX
XXXXXXXX	XXXXXXXX	XXXXXXXX	XXXXXXXX
XXXXXXXX	XXXXXXXX	XXXXXXXX	XXXXXXXX
XXXXXXXX	XXXXXXXX	XXXXXXXX	XXXXXXXX
XXXXXXXX	XXXXXXXX	XXXXXXXX	XXXXXXXX

Footnote^{a b c d e f}

Footnotes can be used in table; alphabetical superscript letters are used.

File formats

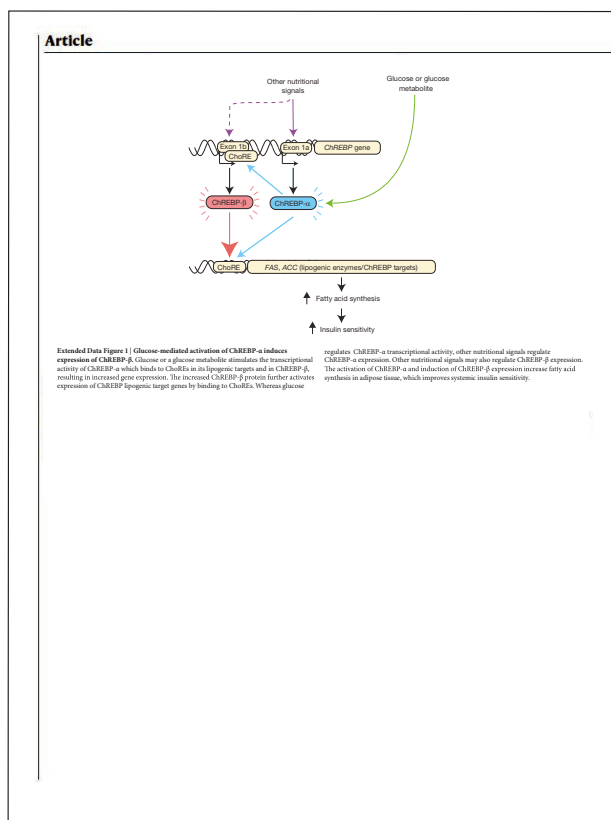
In order to upload to the web, files must be rasterized or flattened.

Export and save each individual figure in **JPEG, TIFF or EPS format** (please note that other file formats are not acceptable for Extended Data files).

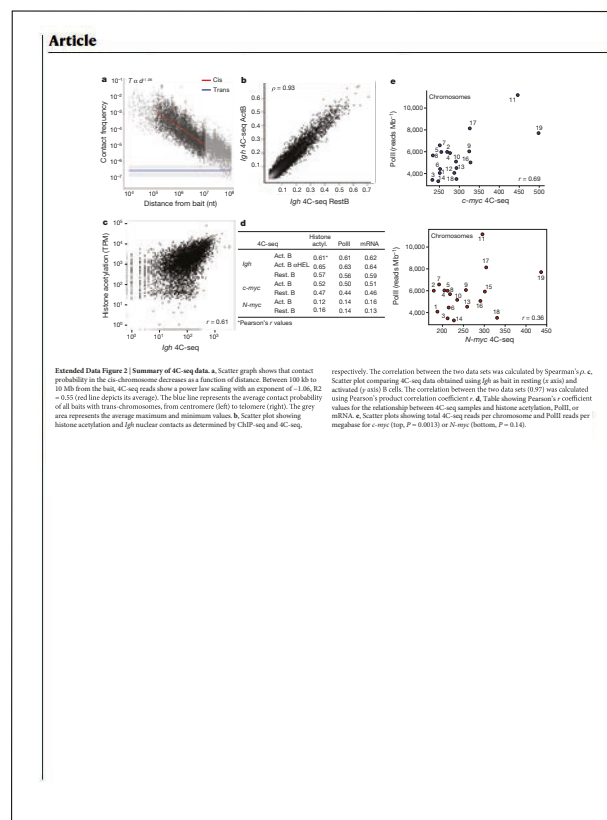
Files must be as small as possible for clear visibility and **must not exceed 10 Mb**.

Example layouts of Extended Data figures and tables, with accompanying legends, are provided on the following page.

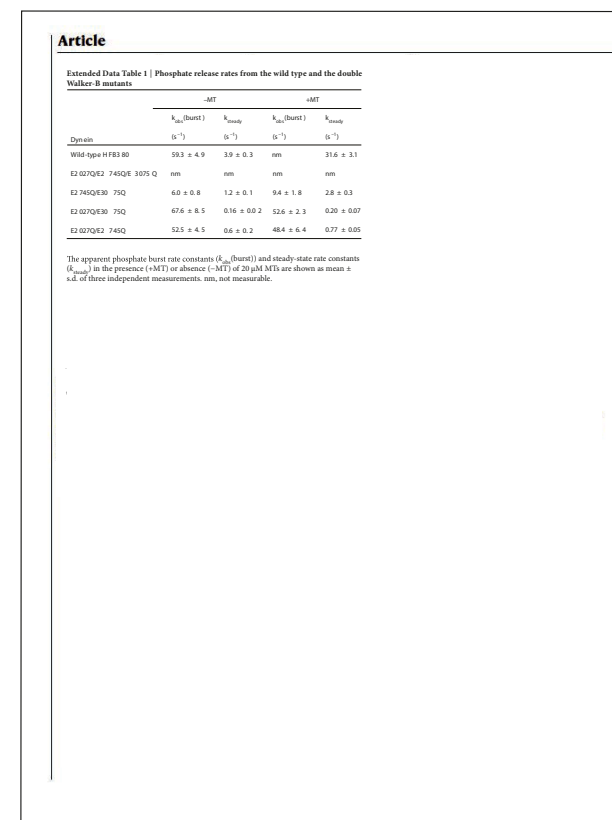
Examples



Text should be maximum of 7 pt, minimum of 5 pt sans serif. Our line range is between 0.25 pt and 1 pt.



Keep white space to a minimum and ensure the panels are nicely aligned.



Add a horizontal rule above and below table column headings; colour should be avoided if possible.